



## 142A Northfield Avenue, London, W13 9SB

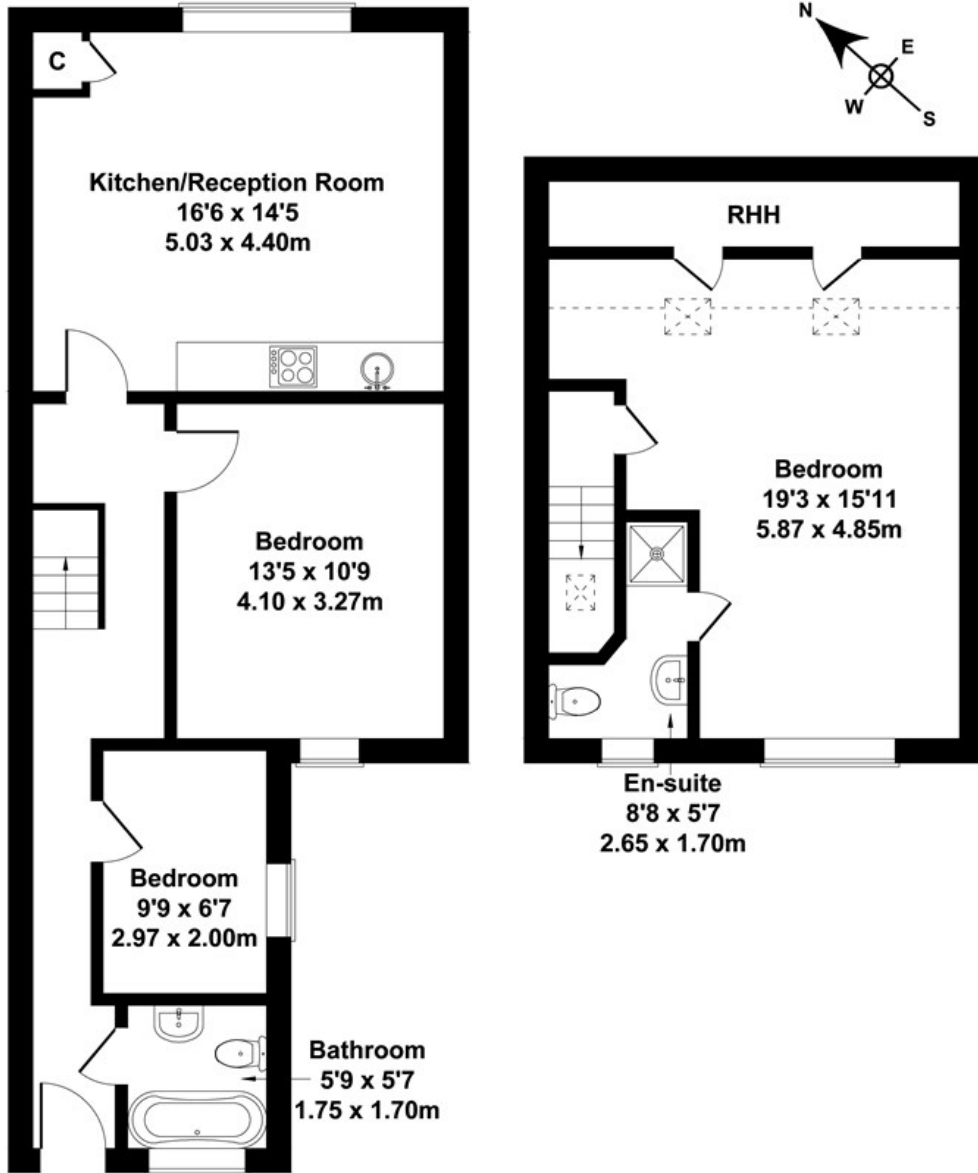
A large three-bedroom split level conversion expertly crafted over the upper two levels of this handsome period terrace property. The property benefits from an abundance of light and space in complimenting modern décor.

- Three bedrooms
- Split level flat
- Over 900 sq ft
- Two bathrooms
- No chain
- Northfields
- Transport links close by
- Opposite Lammas Park

£425,000

# Northfield Avenue

Approximate Gross Internal Area  
936 sq ft - 87 sq m



FIRST FLOOR

SECOND FLOOR

Not to Scale. Produced by The Plan Portal 2021  
For Illustrative Purposes Only.

Energy Efficiency Rating		Current	Potential
Very energy efficient - lower running costs			
(92 plus) A			
(81-91) B			
(69-80) C			
(55-68) D		56	70
(39-54) E			
(21-38) F			
(1-20) G			
Not energy efficient - higher running costs			
England & Wales		EU Directive 2002/91/EC	